

## Columns & Bases

### Illustration Sheet and Catalog Number



AC-44ACOL  
shown

AC-44COL  
shown

### Construction

- Columns are fabricated from (14) gauge steel and provide rigid support of mounted equipment
- Flanges are (10) gauge steel
- All continuous welded seams are finished smooth
- External and internal edges are rounded to prevent injury or damage to cables
- Column has a gasketed access plate
- Kit consisting of a box connector, gasket and hardware is furnished
- Top flange of angle column type is at a 60° angle to the floor
- Bases have hole pattern suitable for any size or type column
- Floor mounting holes and leveling screws provided with each base

### Finish

- Wash and phosphate undercoat
- ANSI 61 gray polyester powder finish

### Standards

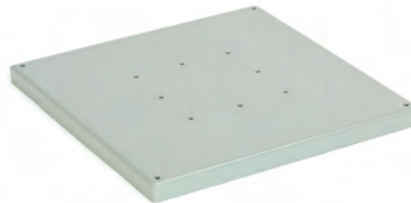
- Conforms to NEMA standard for Type 13 and Type 12

### Application

- Enable floor mounting of various types of enclosures.
- Designed to support enclosures at a 60° angle to the floor

### Discount Schedule: C2

### Subclass: DRO



AC-1818BASE  
shown

Columns					
Catalog Number	Type	Column Size A x B Width x Depth		Access Opening Height x Width	
		in.	mm	in.	mm
AC-44COL	Straight	4.00x4.00	102x102	6.00x2.75	152x70
AC-44ACOL	Angled	4.00x4.00	102x102	6.00x2.75	152x70
AC-66COL	Straight	6.00x6.00	152x152	6.75x4.75	171x121
AC-66ACOL	Angled	6.00x6.00	152x152	6.75x4.75	171x121
Bases					
Catalog Number	Base Size A x B Width x Depth		C in.	D mm	
	in.	mm			
AC-1818BASE	18.00x18.00	457x457	17.00x17.00	432x432	
AC-2424BASE	24.00x24.00	610x610	23.00x23.00	584x584	

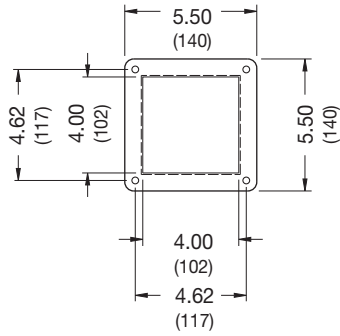
**Notes:** Dimensions are in inches. Millimeters shown are for reference only. Data subject to change without notice.

## Columns & Bases

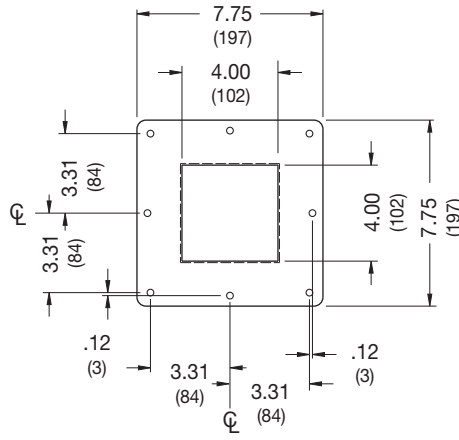
### Illustration Sheet and Catalog Number

#### Flange Detail

**4.00 x 4.00**

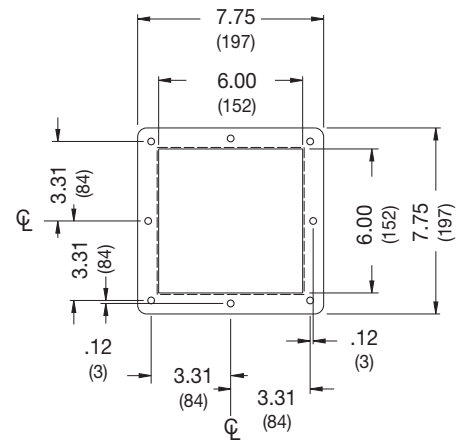


**Top Flange**

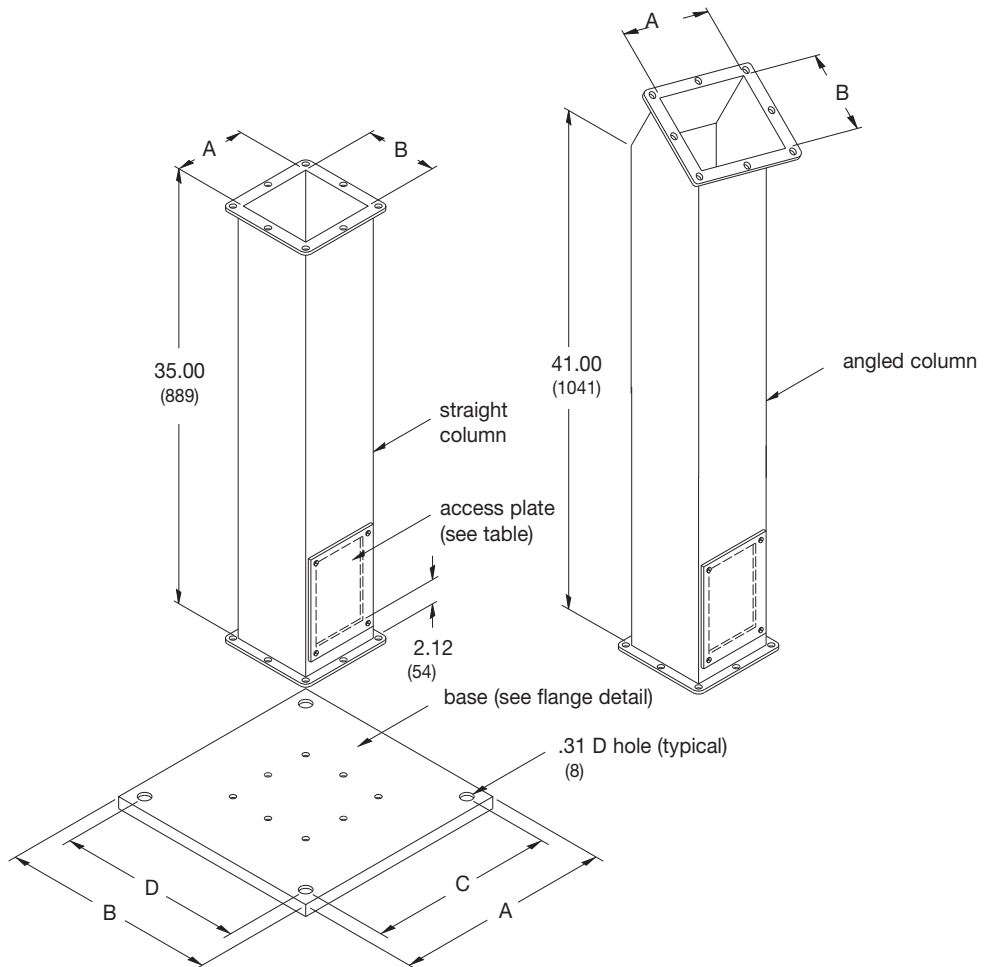


**Bottom Flange**

**6.00 x 6.00**



**Top & Bottom Flange**



**Notes:** Flange holes are .28 D. Flange radii are .37 R. Dimensions are in inches. Millimeters shown are for reference only.  
Data subject to change without notice.