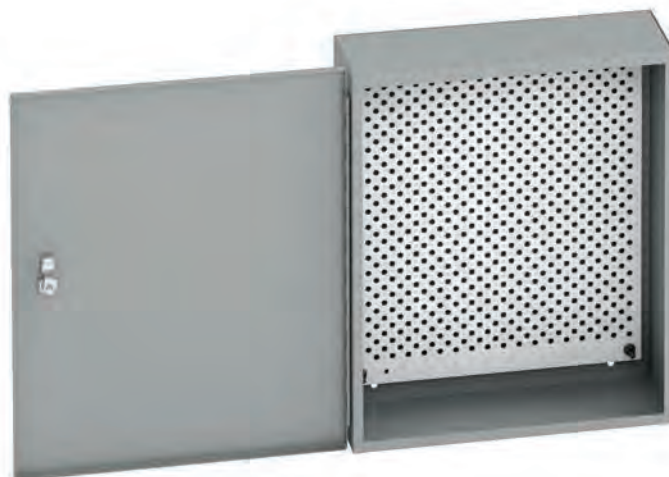


# Type 1, 3, & 3R Enclosures

## Panel Enclosures

### Type 1 Locking Hinge Cover With Perforated Panel

#### Data Sheet and Catalog Number



Type 1, 3, & 3R Enclosures

#### Application

- Houses electrical and electronic controls and instruments in an environment which does not require oil, dust, or water tight specifications
- Protects against contact with enclosed equipment

#### Standards

- UL 50 listed, Type 1
- CSA C22.2 No. 40 certified, Type 1
- Conforms to NEMA standard for Type 1

#### Finish

- Wash and phosphate undercoat
- ANSI 61 gray acrylic electro-coat finish

#### Accessories

- Touch-up paint (84034)
- Self-tapping screws (10168)

#### Construction

- Covers and bodies are fabricated from code gauge steel (see below)
- Includes panel grounding hardware kit
- Cover has keyed quarter-turn lock, two (2) keys are included
- Includes removable 16 gauge white perforated panel
- Enclosure body has mounting holes on the back which are accessible with or without the panel installed
- Cover is secured to the body with a continuous hinge on one side and a flush latch on the opposite side

#### Discount Schedule: C2

#### Subclass: D85

Catalog Number	Height x Depth x Length A x B x C		Gauge		Perforated Panel Size	
	in.	mm	in.	mm	in.	mm
12126-1PP	12.00 x 12.00 x 6.00	305 x 305 x 152	16	1.4	10.25 x 10.25	260.3 x 260.3
16126-1PP	16.00 x 12.00 x 6.00	406 x 305 x 152	16	1.4	13.00 x 10.50	260.3 x 260.3
20166-1PP	20.00 x 16.00 x 6.00	508 x 406 x 152	16	1.4	17.00 x 14.50	431.8 x 368.3
24206-1PP	24.00 x 20.00 x 6.00	610 x 508 x 152	14	1.9	21.00 x 18.50	533.4 x 469.9
36246-1PP	36.00 x 24.00 x 6.00	914 x 610 x 152	14	1.9	32.00 x 22.50	812.8 x 571.5
36306-1PP	36.00 x 30.00 x 6.00	914 x 762 x 152	14	1.9	32.00 x 28.50	812.8 x 723.9

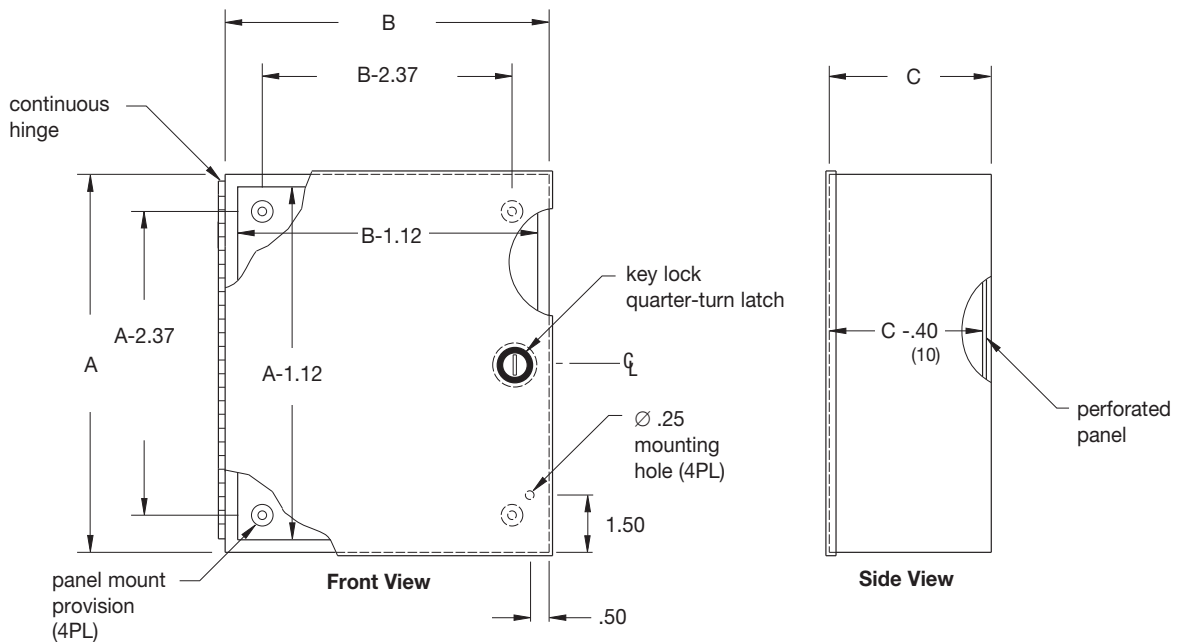
**Notes:** Cooper B-Line can provide special sizes, finishes and other modifications. Consult the factory for your special requirements. Dimensions are in inches. Millimeters shown are for reference only. Data subject to change without notice.

## Panel Enclosures

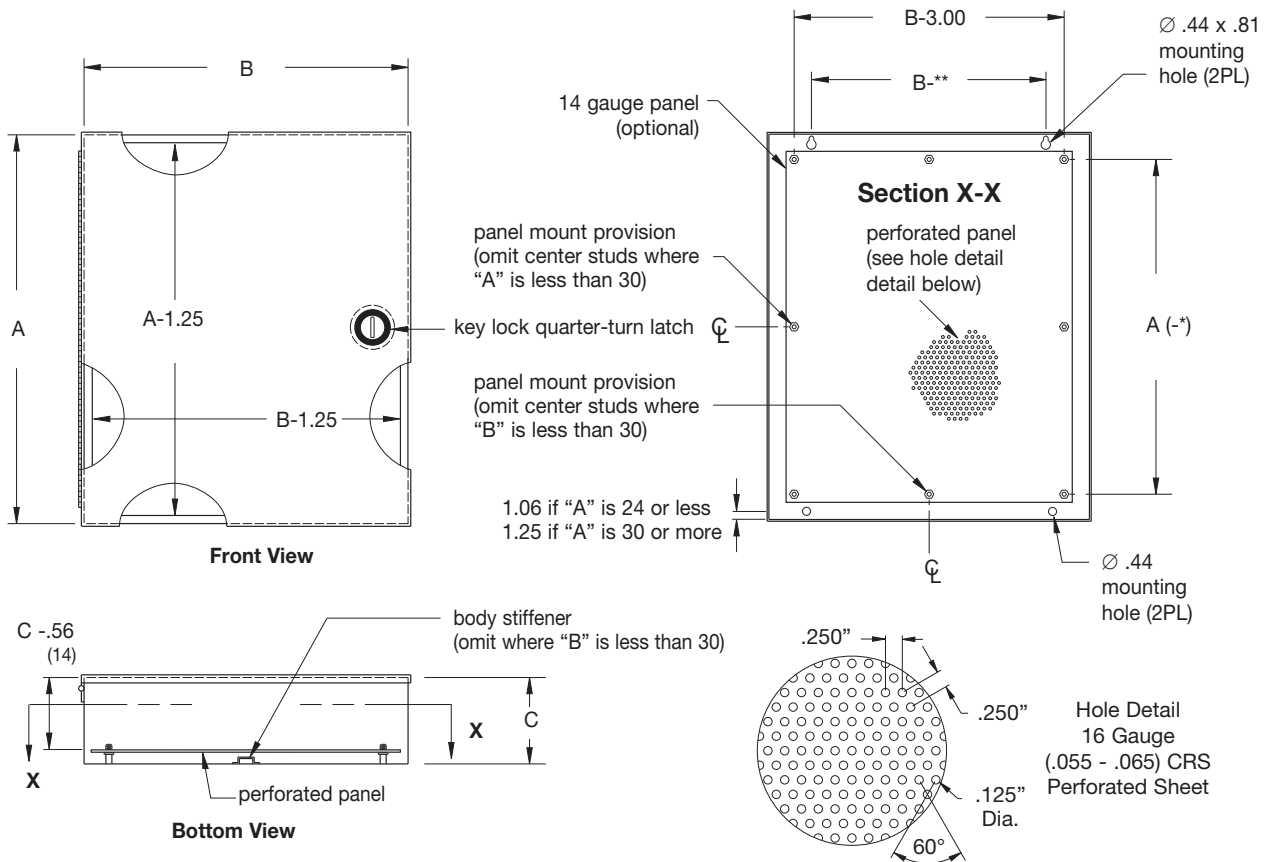
### Type 1 Locking Hinge Cover With Perforated Panel

#### Illustration Sheet

#### Drawings for 12126-1PP



#### Drawings for 16126-1PP, 20166-1PP, 24206-1PP, 36246-1PP, 36306-1PP



**Note:** \* = 4.50 if "A" is 24 or less \* = 5.50 if "A" is 30 or more  
 \*\* = 5.00 if "B" is 24 or less \*\* = 7.25 if "B" is 30 or more.

**Notes:** Dimensions are in inches. Millimeters shown are for reference only. Data subject to change without notice.