

## Features

- Snap element for sheet-metal cut out
- practical and easy handling
- Reduction of material and assembly costs
- For all standard Han® B inserts and terminal block connectors
- Space saving

Connector inserts and terminal block connectors can be fixed on elements for panel mounting with standard insert mounting screws.

High mechanical security of the fixings. No functional impairment is caused by slight over tightening of the fixing screws.

Alternatively, Han coding elements (code pins or guide pins and bushes) may be used.

Connector assembly into the panel (sheet-metal) cut out or two parallel mounted rails is possible from mating or termination side.

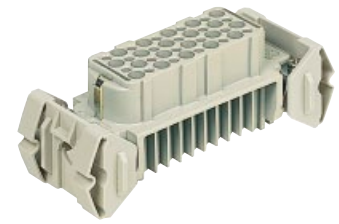
## Technical characteristics

Min. retention force in sheet-metal cut out	
- Mating	
without guiding	250 N
with guiding	400 N
- Unmating	
without guiding	400 N
with guiding	500 N
Vibration resistance	IEC 60 068, part 2-6 BN 74018
Resistance to shock	IEC 60 068, part 2-27 BN 74018
Tightening torque of fixing screws/ coding elements	0.8 Nm
Material	Thermoplastic resin, polycarbonate, RAL 7032, grey
Flammability acc. to UL 94	V 0
Limiting temperatures	-40 °C ... +125 °C

## Range of delivery

Range of delivery comprises:

2 panel plastic mounting parts sufficient for  
one insert or terminal block connector



Identification

Part number

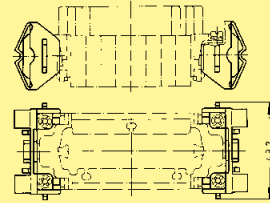
Drawing

Dimensions in mm

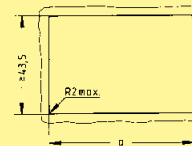
Panel mounting parts  
Thermoplastic



**09 33 000 9985**



Panel cut out  
Sheet-metal thickness 1.3 - 3 mm



Size	a <sup>+0.5</sup>
6 B	65
10 B	78
16 B	98
24 B	125
10 A*	81.5
16 A*	98

\* with corresponding adapter (see page 11.18-19)