

NEMA Type 1, 2, 4, 6, 6P & 13
UL ENCLOSURE 1, 2, 4, 6, 6P & 13
EN 60529 Degree of Protection IP68
IEC 60601-2-2

Driptight • Dusttight • Watertight • Oiltight
DEVELOPED FOR WORLDWIDE APPLICATIONS

Materials of Construction:

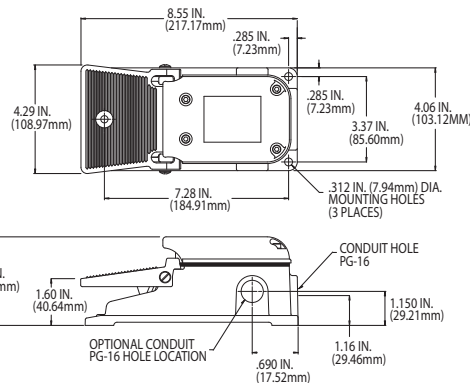
- Treadle and housing constructed from cast aluminum for environmental durability
- Painted Alert Orange
- Single PG 16 threaded conduit entry is standard

Features & Benefits:

- Protected by a strong cast iron cover
- Developed for worldwide application
- Snap action - SPDT and DPDT with forced disconnect (positive break) on NC contacts
- Slow action mechanism with forced disconnect on the NC contacts - available as SPDT make before break or break before make
- Direct PLC interface compatible (two-circuit bifurcated contact single-pole versions)
- Galvanically isolated bifurcated contacts - NO and NC circuits can be wired to different loads and polarities
- 3 holes provided for rigid mounting to the floor or equipment

Options:

- Oversize "O" and "OX" Shield models accept oversized safety shoes and metatarsal foot guards. The "OX" Shield has an additional 3/4" (19.1 mm) opening height as compared to the "O" shield
- 3/4-14 N.P.T. also available as standard for select models
- U.S. and other international conduit sizes and side entry available to the OEM on special order
- Side entry PG16 threaded conduit entry available
- Twin and triple models available - Special Order



Size (HxWxD):	3.50 x 4.29 x 8.55 In.
Weight:	4.50 lbs.

⚠ WARNING SEE PRODUCT WARNING ON PAGE 8 SPECIFICATIONS (Special variations are available to the O.E.M. on special order on the models listed below)						
AGENCY APPROVALS	EN 60529 Degree of Protection	CATALOG NUMBER	DESCRIPTION	CIRCUIT	FORM	ELECTRICAL RATINGS
	IP68	936-SWN	Momentary	SPDT-SNAP ACTION		A300, Q300: I _{th} = 10A (AC) I _{th} = 2.5 A (DC)
	IP68	936-SWNBM	Momentary	SPDT-SLOW ACTION BBM ¹		AC15: U _e = 240V; I _e = 3A U _e = 120V; I _e = 6A
	IP68	936-SWNMB	Momentary	SPDT-SLOW ACTION MBB ²		DC13: U _e = 250V; I _e = 0.27A U _e = 120V; I _e = 0.55A
	IP68	937-SWN	Momentary	DPDT-SNAP ACTION		U _e = 24V; I _e = 2.5A

¹Break Before Make ²Make Before Break



NEMA Type 1, 2, 4, 6, 6P & 13
UL ENCLOSURE 1, 2, 4, 6, 6P & 13
EN 60529 Degree of Protection IP68
IEC 60601-2-2

Driptight • Dusttight • Watertight • Oiltight
DEVELOPED FOR WORLDWIDE APPLICATIONS

Materials of Construction:

- Treadle and housing constructed from cast aluminum for environmental durability
- Painted Alert Orange
- Single PG 16 threaded conduit entry is standard

Features & Benefits:

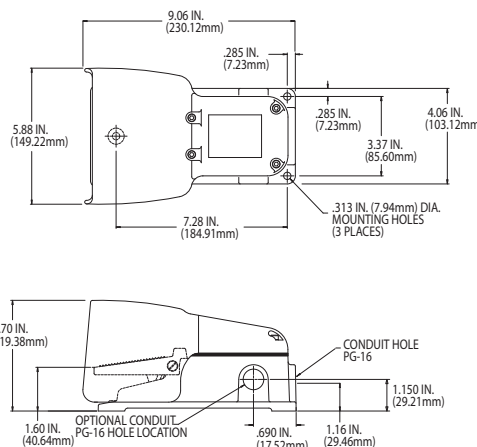
- Protected by a strong cast aluminum Shield
- Developed for worldwide application
- Snap action - SPDT and DPDT with forced disconnect (positive break) on NC contacts
- Slow action mechanism with forced disconnect on the NC contacts - available as SPDT make before break or break before make
- Direct PLC interface compatible (two-circuit bifurcated contact single-pole versions)
- Galvanically isolated bifurcated contacts - NO and NC circuits can be wired to different loads and polarities
- 3 holes provided for rigid mounting to the floor or equipment

Options:

- Oversize "O" and "OX" Shield models accept oversized safety shoes and metatarsal foot guards. The "OX" Shield has an additional 3/4" (19.1 mm) opening height as compared to the "O" shield
- 3/4-14 N.P.T. also available as standard for select models
- U.S. and other international conduit sizes and side entry available to the OEM on special order
- Side entry PG16 threaded conduit entry available
- Twin and triple models available - Special Order



Size (HxWxD):	4.70 x 5.88 x 9.06 In.
Weight:	4.50 lbs.



⚠ WARNING SEE PRODUCT WARNING ON PAGE 8

SPECIFICATIONS (Special variations are available to the O.E.M. on special order on the models listed below)

AGENCY APPROVALS	EN 60529 Degree of Protection	CATALOG NUMBER	DESCRIPTION	CIRCUIT	FORM	ELECTRICAL RATINGS
	IP68	936-SWH	Momentary	SPDT-SNAP ACTION		A300, Q300: Ith = 10A (AC) Ith = 2.5 A (DC)
	IP68	936-SWHC4 ¹	Momentary	SPDT-SNAP ACTION		AC15: Ue = 240V; Ie = 3A Ue = 120V; Ie = 6A
	IP68	936-SWHBM	Momentary	SPDT-SLOW ACTION BBM ²		DC13: Ue = 250V; Ie = 0.27A Ue = 120V; Ie = 0.55A
	IP68	936-SWHMB	Momentary	SPDT-SLOW ACTION MBB ³		Ue = 24V; Ie = 2.5A
	IP68	937-SWH	Momentary	DPDT-SNAP ACTION		

¹Single 3/4" - N.P.T. Conduit Entry ²Break Before Make ³Make Before Break

NEMA Type 1, 2, 4, 6, 6P & 13
UL ENCLOSURE 1, 2, 4, 6, 6P & 13
EN 60529 Degree of Protection IP68
IEC 60601-2-2

Driptight • Dusttight • Watertight • Oiltight
DEVELOPED FOR WORLDWIDE APPLICATIONS

Materials of Construction:

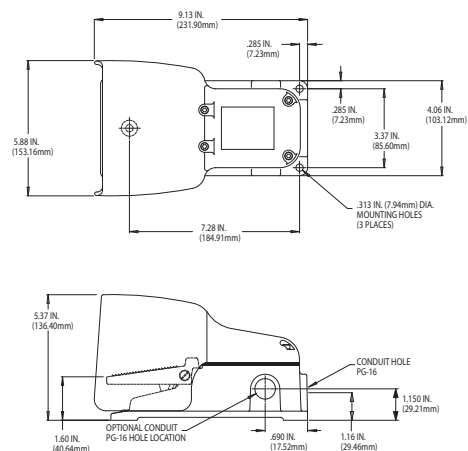
- Treadle and housing constructed from cast aluminum for environmental durability
- Painted Alert Orange
- Single PG 16 threaded conduit entry is standard

Features & Benefits:

- Protected by a strong cast aluminum Shield
- Developed for worldwide application
- Snap action - SPDT and DPDT with forced disconnect (positive break) on NC contacts
- Slow action mechanism with forced disconnect on the NC contacts - available as SPDT make before break or break before make
- Direct PLC interface compatible (two-circuit bifurcated contact single-pole versions)
- Galvanically isolated bifurcated contacts - NO and NC circuits can be wired to different loads and polarities
- 3 holes provided for rigid mounting to the floor or equipment

Options:

- Oversize "O" and "OX" Shield models accept oversized safety shoes and metatarsal foot guards. The "OX" Shield has an additional 3/4" (19.1 mm) opening height as compared to the "O" shield
- 3/4-14 N.P.T. also available as standard for select models
- U.S. and other international conduit sizes and side entry available to the OEM on special order
- Side entry PG16 threaded conduit entry available
- Twin and triple models available - Special Order



Size (HxWxD):	5.37 x 5.88 x 9.13 In.
Weight:	4.50 lbs.

⚠ WARNING SEE PRODUCT WARNING ON PAGE 8

SPECIFICATIONS (Special variations are available to the O.E.M. on special order on the models listed below)

AGENCY APPROVALS	EN 60529 Degree of Protection	CATALOG NUMBER	DESCRIPTION	CIRCUIT	FORM	ELECTRICAL RATINGS
	IP68	936-SWHO	Momentary	SPDT-SNAP ACTION		A300, Q300: Ith = 10A (AC) Ith = 2.5 A (DC)
	IP68	936-SWHOBM	Momentary	SPDT-SLOW ACTION BBM ¹		AC15: Ue = 240V; Ie = 3A
	IP68	936-SWHOMB	Momentary	SPDT-SLOW ACTION MBB ²		Ue = 120V; Ie = 6A
	IP68	937-SWHO	Momentary	DPDT-SNAP ACTION		DC13: Ue = 250V; Ie = 0.27A Ue = 120V; Ie = 0.55A Ue = 24V; Ie = 2.5A

¹Break Before Make ²Make Before Break



NEMA Type 1, 2, 4, 6, 6P & 13
UL ENCLOSURE 1, 2, 4, 6, 6P & 13
EN 60529 Degree of Protection IP68
IEC 60601-2-2

Driptight • Dusttight • Watertight • Oiltight
DEVELOPED FOR WORLDWIDE APPLICATIONS

Materials of Construction:

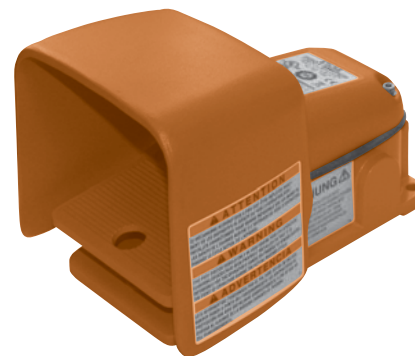
- Treadle and housing constructed from cast aluminum for environmental durability
- Painted Alert Orange
- Single PG 16 threaded conduit entry is standard

Features & Benefits:

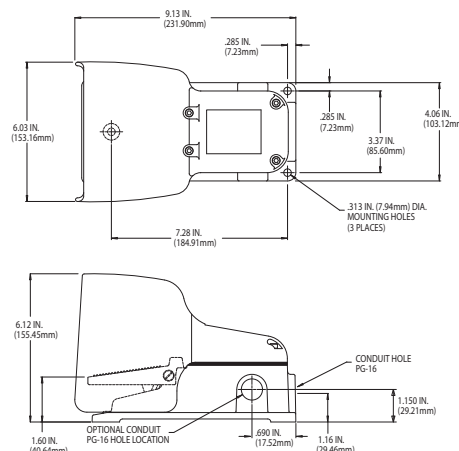
- Protected by a strong cast aluminum Shield
- Developed for worldwide application
- Snap action - SPDT and DPDT with forced disconnect (positive break) on NC contacts
- Slow action mechanism with forced disconnect on the NC contacts - available as SPDT make before break or break before make
- Direct PLC interface compatible (two-circuit bifurcated contact single-pole versions)
- Galvanically isolated bifurcated contacts - NO and NC circuits can be wired to different loads and polarities
- 3 holes provided for rigid mounting to the floor or equipment















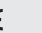

Options:

- Oversize "O" and "OX" Shield models accept oversized safety shoes and metatarsal foot guards. The "OX" Shield has an additional 3/4" (19.1 mm) opening height as compared to the "O" shield
- 3/4-14 N.P.T. also available as standard for select models
- U.S. and other international conduit sizes and side entry available to the OEM on special order
- Side entry PG16 threaded conduit entry available
- Twin and triple models available - Special Order



Size (HxWxD):	6.12 x 6.03 x 9.13 In.
Weight:	4.50 lbs.



⚠ WARNING SEE PRODUCT WARNING ON PAGE 8						
SPECIFICATIONS (Special variations are available to the O.E.M. on special order on the models listed below)						
AGENCY APPROVALS	EN 60529 Degree of Protection	CATALOG NUMBER	DESCRIPTION	CIRCUIT	FORM	ELECTRICAL RATINGS
   	IP68	936-SWHOX	Momentary	SPDT-SNAP ACTION		A300, Q300: I _{th} = 10A (AC) I _{th} = 2.5 A (DC)
   	IP68	936-SWHOXBM	Momentary	SPDT-SLOW ACTION BBM ¹		AC15: U _e = 240V; I _e = 3A
   	IP68	936-SWHOXMB	Momentary	SPDT-SLOW ACTION MBB ²		U _e = 120V; I _e = 6A
   	IP68	937-SWHOX	Momentary	DPDT-SNAP ACTION		DC13: U _e = 250V; I _e = 0.27A U _e = 120V; I _e = 0.55A U _e = 24V; I _e = 2.5A
¹ Break Before Make ² Make Before Break						