

NEMA Type 1, 2, 4 & 13
UL ENCLOSURE 1, 2, 4 & 13
CSA ENCLOSURE 1, 2, 4 & 13
EN 60529 Degree of Protection IP56

Driptight • Dusttight • Watertight • Oiltight
MEDIUM DUTY COMPACT DESIGN

Materials of Construction:

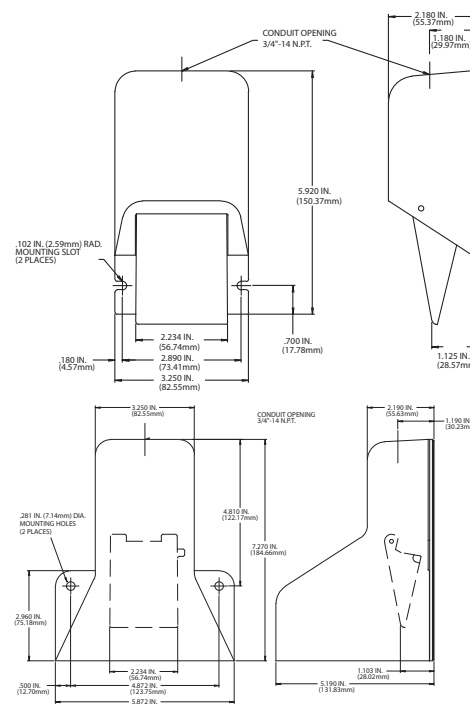
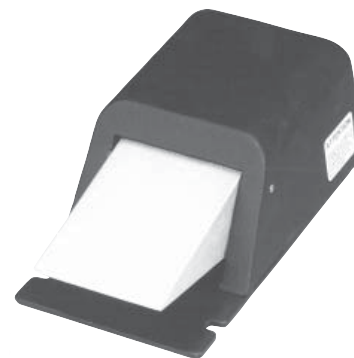
- Cast aluminum body and treadle with steel base plate and nonskid base pad
- Single 3/4"-14 N.P.T. threaded conduit entry is standard

Features & Benefits:

- All models single stage momentary contact
- 2 holes provided for rigid mounting to floor or equipment

Options:

- Special threaded conduit entry available to the O.E.M. on special order (Dual / Metric)
- Single/Dual 1/2 In. -14 NPT threaded conduit entry
- Metric threaded conduit entry



No Shield	
Size (HxWxD):	2.25 In. x 3.50 x 6.20 In.
Weight:	1.50 lbs.
Shielded	
Size (HxWxD):	5.19 In. x 5.90 x 7.25 In.
Weight:	2.75 lbs.

⚠ WARNING SEE PRODUCT WARNING ON PAGE 8						
SPECIFICATIONS (Special variations are available to the O.E.M. on special order on the models listed below)						
AGENCY APPROVALS	EN 60529 Degree of Protection	CATALOG NUMBER	DESCRIPTION	CIRCUIT	FORM	ELECTRICAL RATINGS
	IP56	78SN1	Momentary	SPDT	C	20 A 125-250 VAC 1 H.P. 125-250 VAC Heavy Pilot Duty 250 VAC Max.
	IP56	78SN2	Momentary	DPDT	C	
	IP56	78SH1	Momentary / Shielded	SPDT	C	
	IP56	78SH2	Momentary / Shielded	DPDT	C	