

EN 60529 Degree of Protection IPXX Master Actuator
EN 60529 Degree of Protection IP00 Snap Switch

Momentary/Maintained AirSwitch • Isolated Electric Snap Switch
ERGONOMIC VERSATILE DESIGN

Materials of Construction:

- Molded PVC bulb
- Designed with isolated electrical airswitch
- Combines a foot operated air bulb and a remotely located electric snap switch
- Brass fittings
- Actuating Bulb supplied with two grommet mounting holes (Standard Only)

Features & Benefits:

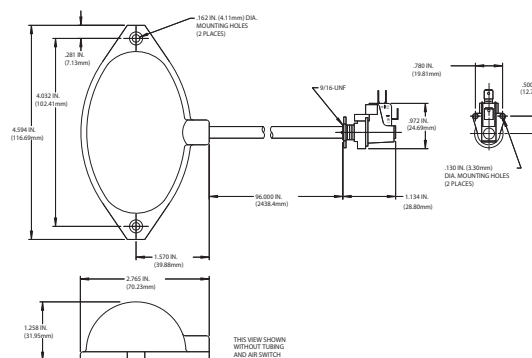
- Easy to operate by hand or foot
- Up to 30 foot range using PVC tubing
- Isolates operation from electrically live switch
- Offers environmental protection from short or shock
- Designed for long life trouble free operation
- Simple field replacement of components
- Application versatility
- Ease of interfacing




Options:

- Air foot switches are also available in the Premier and Dolphin housings, as well as, a hand operated version
- Aluminum Baseplate
- DPDT Model available
- Clear reinforced tubing available



| | |
|---------------------|------------------------|
| Actuating Bulb | |
| Size (HxWxD): | 1.26 x 4.59 x 2.77 In. |
| Weight: | .20 lbs. |
| Actuating Hand Bulb | |
| Size (HxWxD): | 1.20 x 2.12 x 1.75 In. |
| Weight: | .15 lbs. |
| Snap Switch | |
| Size (HxWxD): | 1.00 x .78 x .50 In. |
| Weight: | .15 lbs. |



| ⚠ WARNING SEE PRODUCT WARNING ON PAGE 8 | | | | | | | |
|---|-------------------------------|---------------------|---------------------|---------|------|-----------------------------|--|
| SPECIFICATIONS (Special variations are available to the O.E.M. on special order on the models listed below) | | | | | | | |
| AGENCY APPROVALS | EN 60529 Degree of Protection | CATALOG NUMBER | DESCRIPTION | CIRCUIT | FORM | OPERATING TEMPERATURE RANGE | ELECTRICAL RATINGS |
|  | N/A | 81SH12 | Standard Momentary | SPDT | C | 10°F to 120°F ² | 20 A 125-250 VAC 1 H.P. 125 VAC 2 H.P. 250 VAC |
|  | N/A | 81DH12 | Standard Maintained | | | | |
|  | N/A | PBSH12 ¹ | Hand Bulb Momentary | SPDT | C | 10°F to 120°F ² | 20 A 125-250 VAC 1 H.P. 125 VAC 2 H.P. 250 VAC |

¹Special Order Only ²The operating temperature range will vary with different lengths of tubing. Please consult the factory for details.