

Mounting components for conduit mounting



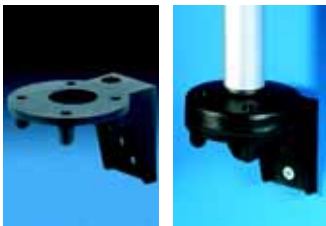
4



5



6



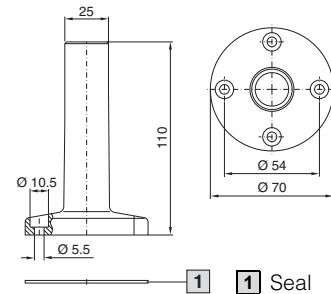
7

Fig.	Mounting component	Colour	Suitable for signal pillar		Model No. SG
			LED compact	modular	
4	Base with integral conduit, Ø 25 mm, 110 mm long	Black	■ ¹⁾	■ ²⁾	2374.000
5	Individual base	Black	■	■	2374.010
6	Single conduit, 250 mm long	Aluminium	■ ¹⁾	■ ²⁾	2374.020
	Single conduit, 400 mm long	Aluminium	■ ¹⁾	■ ²⁾	2374.030
7	Angle bracket for conduit mounting	Black	■	■	2374.050

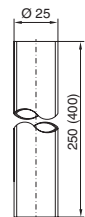
! Also required:

- 1) Connection adaptor SG 2372.120, see page 1125.
- 2) Connection component SG 2368.000, see page 1126.

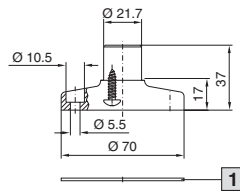
Base with integral conduit



Single conduit

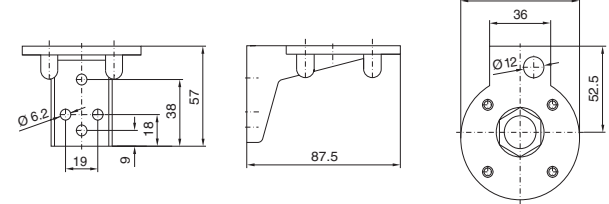


Individual base, plastic



1 Seal

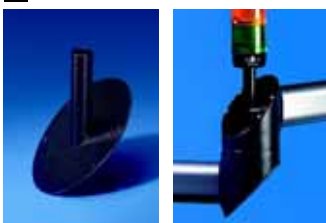
Angle bracket for conduit mounting



Mounting components for support arm systems



8



9



10

Fig.	Mounting component	Colour	Suitable for signal pillar		Model No. SG
			LED compact	modular	
8	For support arm system CP-L – Angle piece CP 6524.0X0 – Angle coupling CP 6526.0X0	RAL 9017 (traffic black)	■ ¹⁾	■ ²⁾	2375.000
9	For support arm system CP-L – Intermediate hinge CP 6523.0X0 – Wall mounted hinge CP 6521.0X0 – Top mounted joint CP 6522.0X0	RAL 9017 (traffic black)	■ ¹⁾	■ ²⁾	2375.020
10	For support arm system CP-S – Angle piece 90° CP 6501.140	RAL 7024 (graphite grey)	■ ¹⁾	■ ²⁾	2375.030

! Also required:

- 1) Connection adaptor SG 2372.120, see page 1125.
- 2) Connection component SG 2368.000, see page 1126.