

Rittal – The System.

Faster – better – everywhere.



SV 3516.000

PLS Special Busbars, E-Cu

State: 3/14/2022 (Source: rittal.com/us-en)

ENCLOSURES

POWER DISTRIBUTION

CLIMATE CONTROL

IT INFRASTRUCTURE

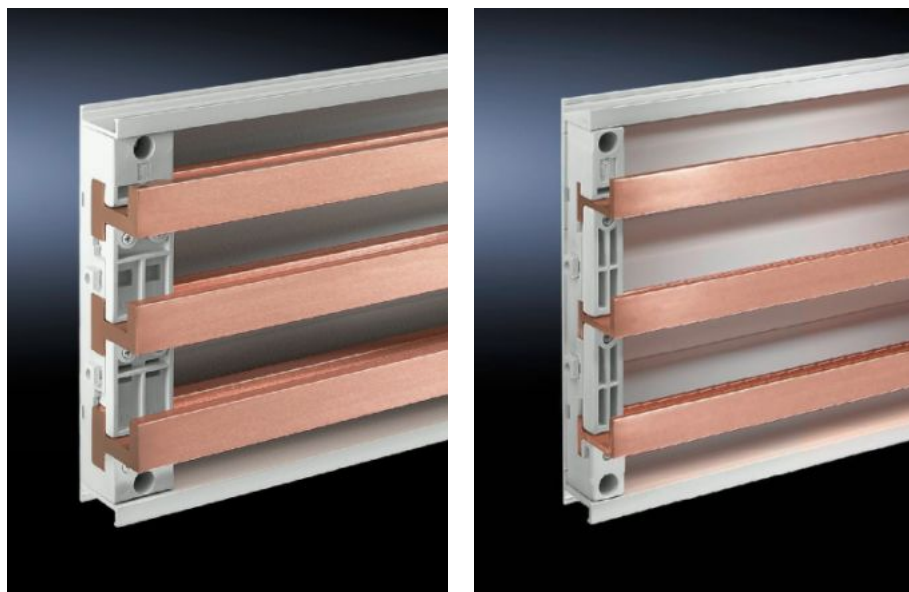
SOFTWARE & SERVICES

FRIEDHELM LOH GROUP



SV 3516.000 - PLS Special Busbars, E-Cu

Lengths range from 495 mm to 2400 mm.



Features

Material	E-Cu
Bar thickness	10 mm 0.39 "
Cross section	900 mm ²
Length	2,400 mm 94.5 "
Note	May be cut to length as required
Busbar type	Busbar E-Cu
Suitable for busbar system	RiLine60 (with PLS 1600)
Dimensions	Length: 2,400 mm Length: 94.5 "
Weight/package unit	19.21 kg 42.4 lb.
Packaging unit	1 Stück
ETIM 7.0	EC001522

Features

ECLASS 8.0	27370303
------------	----------

Approvals

Approvals	UL + C-UL
Explanations	Declaration of conformity
