

Rittal – The System.

Faster – better – everywhere.



SV 3525.010

PLS Special Busbars, E-Cu

State: 3/14/2022 (Source: rittal.com/us-en)

ENCLOSURES

POWER DISTRIBUTION

CLIMATE CONTROL

IT INFRASTRUCTURE

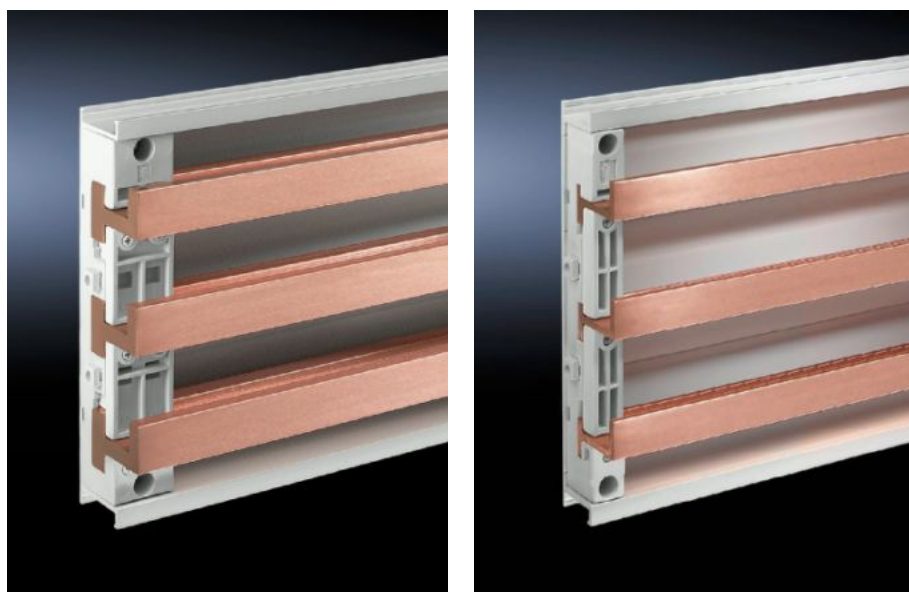
SOFTWARE & SERVICES

FRIEDHELM LOH GROUP



SV 3525.010 - PLS Special Busbars, E-Cu

Lengths range from 495 mm to 2400 mm.



Features

Material	E-Cu
Bar thickness	5 mm 0.2 ″
Cross section	300 mm ²
Length	895 mm 35.2 ″
Note	May be cut to length as required
Busbar type	Busbar E-Cu
Suitable for busbar system	PLS 800
Dimensions	Length: 895 mm Length: 35.2 ″
Suitable for	Width: = 1,000 mm Width: = 39.4 ″
Weight/packaging unit	6.96 kg 15.3 lb.

Features

Packaging unit	3 Stück
ETIM 7.0	EC001522
ECLASS 8.0	27370303

Approvals

Approvals	UL + C-UL
Explanations	Declaration of conformity