

Rittal – The System.

Faster – better – everywhere.



SV 3527.000

PLS Special Busbars, E-Cu

State: 3/14/2022 (Source: rittal.com/us-en)

ENCLOSURES

POWER DISTRIBUTION

CLIMATE CONTROL

IT INFRASTRUCTURE

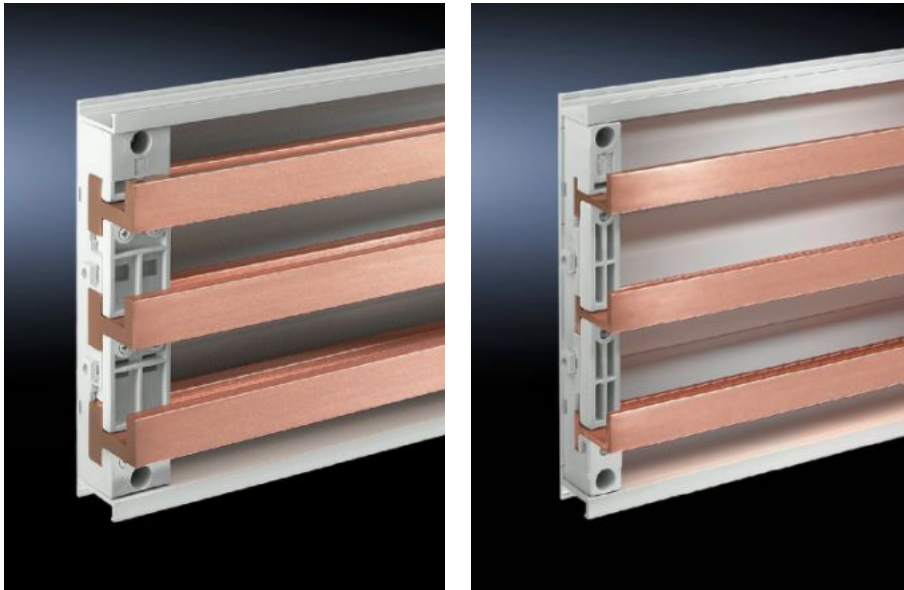
SOFTWARE & SERVICES

FRIEDHELM LOH GROUP



SV 3527.000 - PLS Special Busbars, E-Cu

Lengths range from 495 mm to 2400 mm.



Features

Material	E-Cu
Bar thickness	10 mm 0.39 "
Cross section	900 mm ²
Length	495 mm 19.5 "
Note	May be cut to length as required
Busbar type	Busbar E-Cu
Suitable for busbar system	RiLine60 (with PLS 1600)
Dimensions	Length: 495 mm Length: 19.5 "
Suitable for	Width: = 600 mm Width: = 23.6 "
Weight/packaging unit	11.85 kg 26.1 lb.

Features

Packaging unit	3 Stück
ETIM 7.0	EC001522
ECLASS 8.0	27370303

Approvals

Approvals	UL + C-UL
Explanations	Declaration of conformity