

# Rittal – The System.

Faster – better – everywhere.



## SV 3528.010

## PLS Special Busbars, E-Cu

State: 3/14/2022 (Source: [rittal.com/us-en](http://rittal.com/us-en))

ENCLOSURES

POWER DISTRIBUTION

CLIMATE CONTROL

IT INFRASTRUCTURE

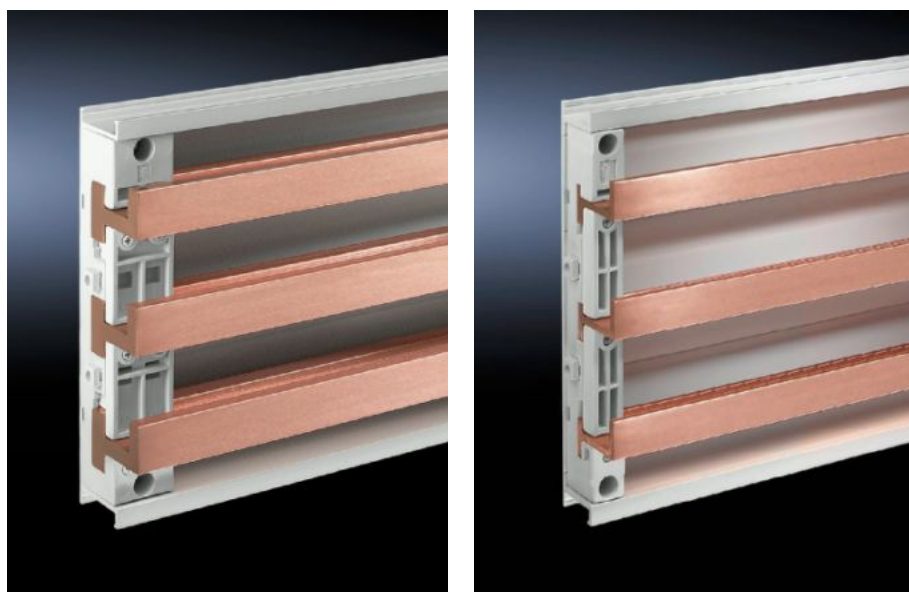
SOFTWARE & SERVICES

FRIEDHELM LOH GROUP



# SV 3528.010 - PLS Special Busbars, E-Cu

Lengths range from 495 mm to 2400 mm.



## Features

Material	E-Cu
Bar thickness	10 mm 0.39 "
Cross section	900 mm <sup>2</sup>
Length	895 mm 35.2 "
Note	May be cut to length as required
Busbar type	Busbar E-Cu
Suitable for busbar system	RiLine60 (with PLS 1600)
Dimensions	Length: 895 mm Length: 35.2 "
Suitable for	Width: = 1,000 mm Width: = 39.4 "
Weight/packaging unit	21.72 kg 47.9 lb.

# Features

---

Packaging unit	3 Stück
ETIM 7.0	EC001522
ECLASS 8.0	27370303

# Approvals

---

Approvals	UL + C-UL
Explanations	Declaration of conformity