

Rittal – The System.

Faster – better – everywhere.



SV 3529.000

PLS Special Busbars, E-Cu

State: 3/14/2022 (Source: rittal.com/us-en)

ENCLOSURES

POWER DISTRIBUTION

CLIMATE CONTROL

IT INFRASTRUCTURE

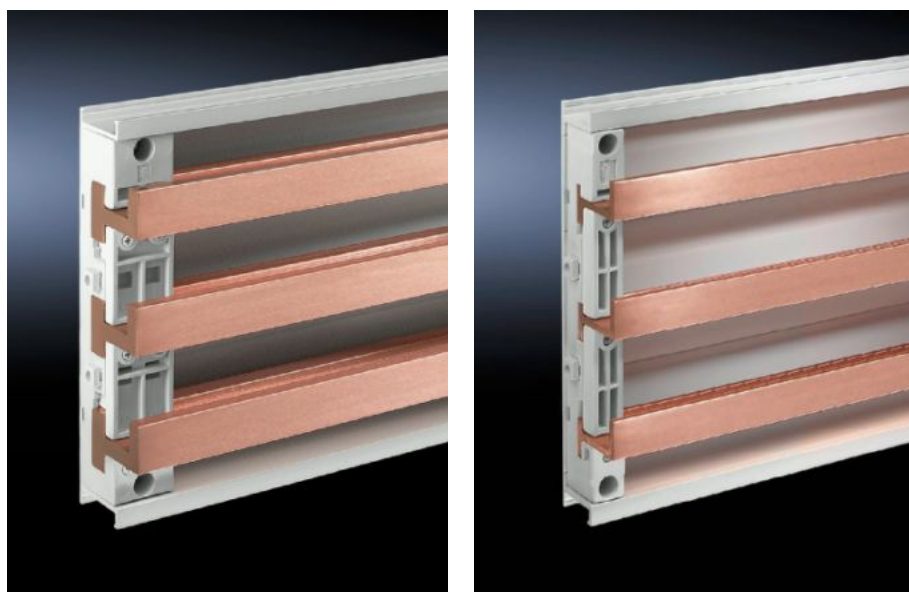
SOFTWARE & SERVICES

FRIEDHELM LOH GROUP



SV 3529.000 - PLS Special Busbars, E-Cu

Lengths range from 495 mm to 2400 mm.



Features

| | |
|----------------------------|--------------------------------------|
| Material | E-Cu |
| Bar thickness | 10 mm 0.39 " |
| Cross section | 900 mm ² |
| Length | 1,095 mm 43.1 " |
| Note | May be cut to length as required |
| Busbar type | Busbar E-Cu |
| Suitable for busbar system | RiLine60 (with PLS 1600) |
| Dimensions | Length: 1,095 mm Length: 43.1 " |
| Suitable for | Width: = 1,200 mm Width: = 47.2 " |
| Weight/packaging unit | 26.58 kg 58.6 lb. |

Features

| | |
|----------------|----------|
| Packaging unit | 3 Stück |
| ETIM 7.0 | EC001522 |
| ECLASS 8.0 | 27370303 |

Approvals

| | |
|--------------|---------------------------|
| Approvals | UL + C-UL |
| Explanations | Declaration of conformity |