



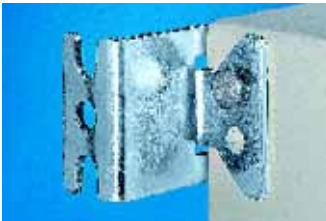
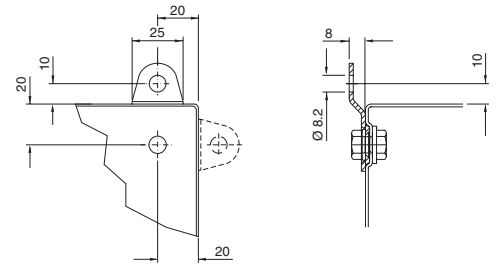
### Wall mounting bracket

For the attachment of KL, EB, BG and EL enclosures as well as DK and FM wall-mounted distributors.

**Supply includes:**  
Assembly parts for mounting on the enclosure.

**Note:**  
For hygiene reasons, and in view of the protection category, the stainless steel enclosures do not have any drilled holes for the wall mounting brackets.

Material	Wall distance mm	Packs of	Model No. SZ
Brass, nickel-plated	8	4	1580.000
Sheet steel, zinc-plated, passivated	8	4	1590.000
Stainless steel 1.4301 (AISI 304)	8	4	1594.000



### Wall mounting bracket

For the attachment of KL, EB, BG, AE, CM and EL enclosures, TP consoles as well as DK, FM wall-mounted distributors and small fibre-optic distributors.

**Supply includes:**  
Assembly parts for mounting on the enclosure.

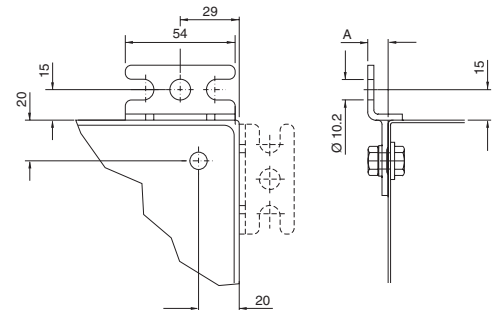
**Note:**  
For hygiene reasons, and in view of the protection category, the stainless steel enclosures and TP consoles do not have any drilled holes for the wall mounting brackets.

Material	Wall distance (A) mm	Packs of	Model No. SZ
Sheet steel, zinc-plated, passivated	40	1	2503.000 <sup>1)</sup>
		4	2503.010
	10	1	2508.000 <sup>1)</sup>
		4	2508.010
Stainless steel 1.4301 (AISI 304)	10	4	2433.000
Stainless steel 1.4404 (AISI 316L)	10	4	2433.500

<sup>1)</sup> Without assembly parts.

**↔ Possible alternative:**

Wall spacer bracket Hygienic Design, see page 301.



### Wall mounting bracket

**for KS**

For attachment to the wall, only possible from the outside of the enclosure.

**Material:**  
Fibreglass-reinforced polyamide<sup>1)</sup>

**Supply includes:**  
Assembly parts for mounting on the enclosure.

Colour	Packs of	Model No. KS/KE
Similar to RAL 7035	4	1483.010
Similar to RAL 9011	4	9266.000 <sup>1)</sup>

<sup>1)</sup> With graphite additive for Ex applications.

