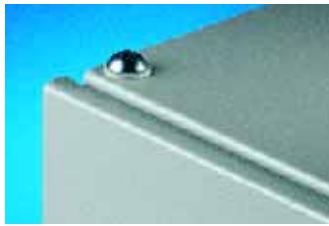


Roof/wall mounting

Roof



Roof mounting screw

For screw-fastening the roof plate instead of eye-bolts. With the TS 8, the contact washers for potential equalisation may be taken from the eye-bolts included with the supply of the enclosures.

Material:

Sheet steel, zinc-plated, passivated

Packs of	Model No. PS
20	4198.000



Spacers

for roof plate TS

To raise the TS 8 roof for ventilation purposes, in three different heights.

Not suitable for crane transportation!

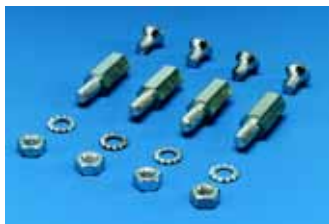
Material:

Hexagonal sectional steel, zinc-plated, passivated

Supply includes:

Assembly parts.

Height mm	Packs of	Model No. SZ/DK
10	4	2422.000
20	4	2423.000
50	4	7967.000



Spacers

for cover plates TE

To assist passive ventilation spacers may be used to raise the cover plates.

Material:

Hexagonal sectional steel, zinc-plated, passivated

Supply includes:

Assembly parts.

Height mm	Packs of	Model No. TE
20	4	7526.963

Note:

Spacers are already included with the supply of the TE enclosures.



Eyebolts

for TS, ES

For crane transportation of enclosures, may already be included in the supply.

Thread: M12

Packs of	Model No. PS
4	4568.000



Eyebolts

for CM

For crane transportation of enclosures, with reinforcement plate to be inserted underneath.

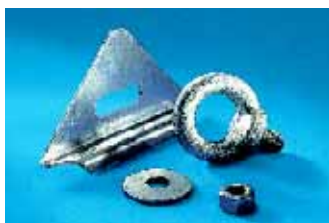
Mounting via the two holes in the top of the CM.

Thread: M12

Supply includes:

Eyebolts, reinforcement plates.

Packs of	Model No. CM
2	2509.500



Eyebolts

for AE

For crane transportation of enclosures, with reinforcement plate to be inserted underneath.

Thread: M12

Supply includes:

Eyebolts, reinforcement plates.

Packs of	Model No. SZ
4	2509.000

Roof

B

7.5