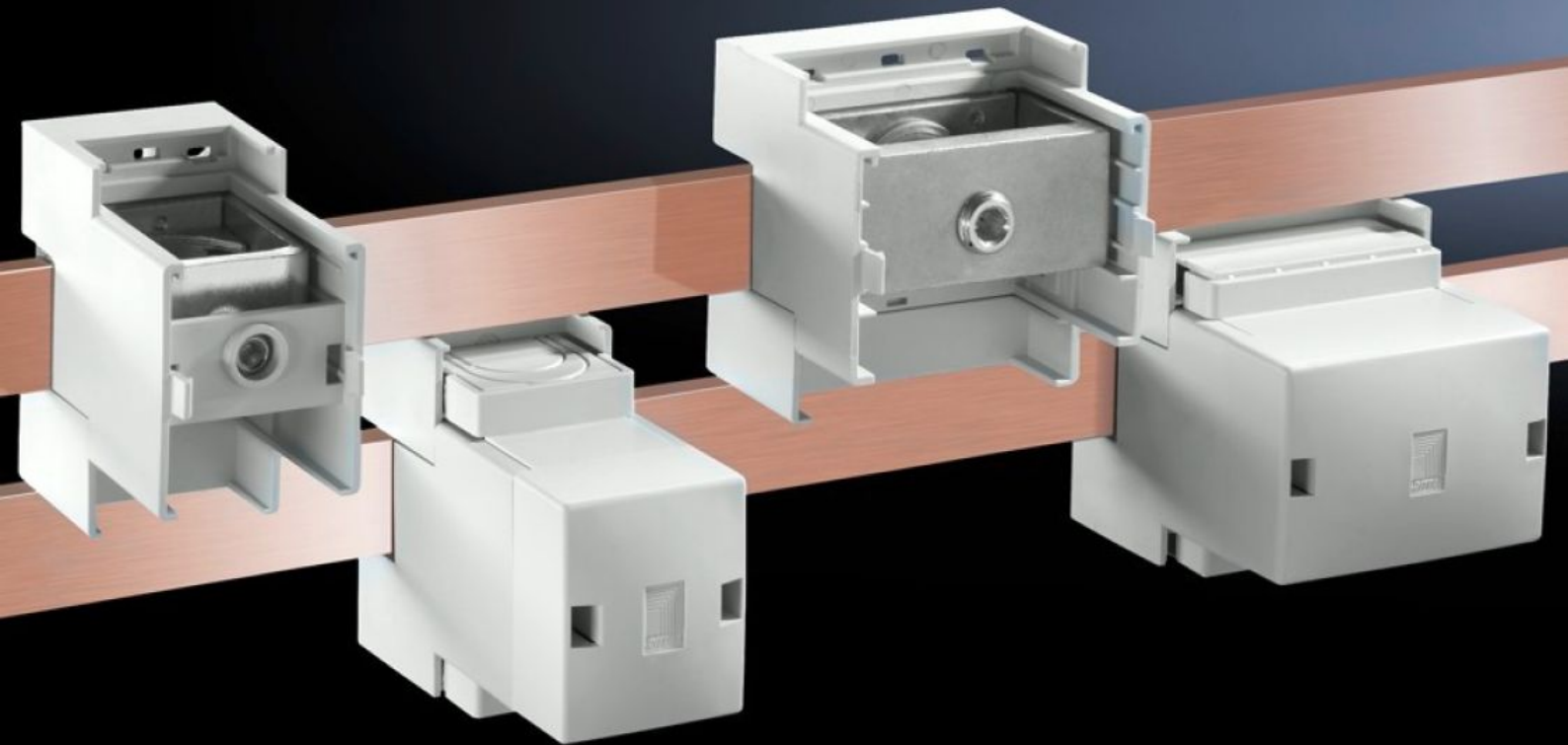


**Rittal – The System.**

Faster – better – everywhere.



# SV 9342.311 Connection block

State: 3/14/2022 (Source: [rittal.com/us-en](http://rittal.com/us-en))

ENCLOSURES

POWER DISTRIBUTION

CLIMATE CONTROL

IT INFRASTRUCTURE

SOFTWARE & SERVICES

FRIEDHELM LOH GROUP



# SV 9342.311 - Connection block

For connecting round conductors and laminated copper bars.

## Features

Product description	Suitable for 12 x 5 to 30 x 10 mm and PLS 800/1600 busbars.
Material	Punched section: Polyamide Cover: ABS Fire protection corresponding to UL 94-V0
Color	RAL 7035
Supply includes	3 terminals including cover
Clamping area for laminated copper bars for 5 mm bar thickness, (W x H)	33 x 26 mm 1.3 x 1.02 "
Clamping area for laminated copper bars for 10 mm bar thickness, (W x H)	33 x 22 mm 1.3 x 0.87 "
Cable outlet	Top/bottom
Rated current max.	800 A
Note	With an overvoltage category III, a rated operational voltage of 1000 V (AC) is achieved. When using the terminal on 2-pole busbar systems (SV 9340.040), the terminal must be rotated through 180° for connection to the PE busbar.
Dimensions	Width: 50 mm Height: 88 mm Width: 1.97 " Height: 3.46 "
Connection of round conductors, fine wire with wire end ferrule	95 - 185 mm <sup>2</sup>
Connection of round conductors, multi-wire	95 - 300 mm <sup>2</sup>

# Features

---

Weight/packaging unit	1.431 kg 3.2 lb.
Packaging unit	3 Stück
ETIM 7.0	EC001900
ECLASS 8.0	27400613

---

# Approvals

---

Approvals	DNV-GL Lloyds Register of Shipping UL + C-UL
Certificates	EAC
Explanations	Declaration of conformity

---