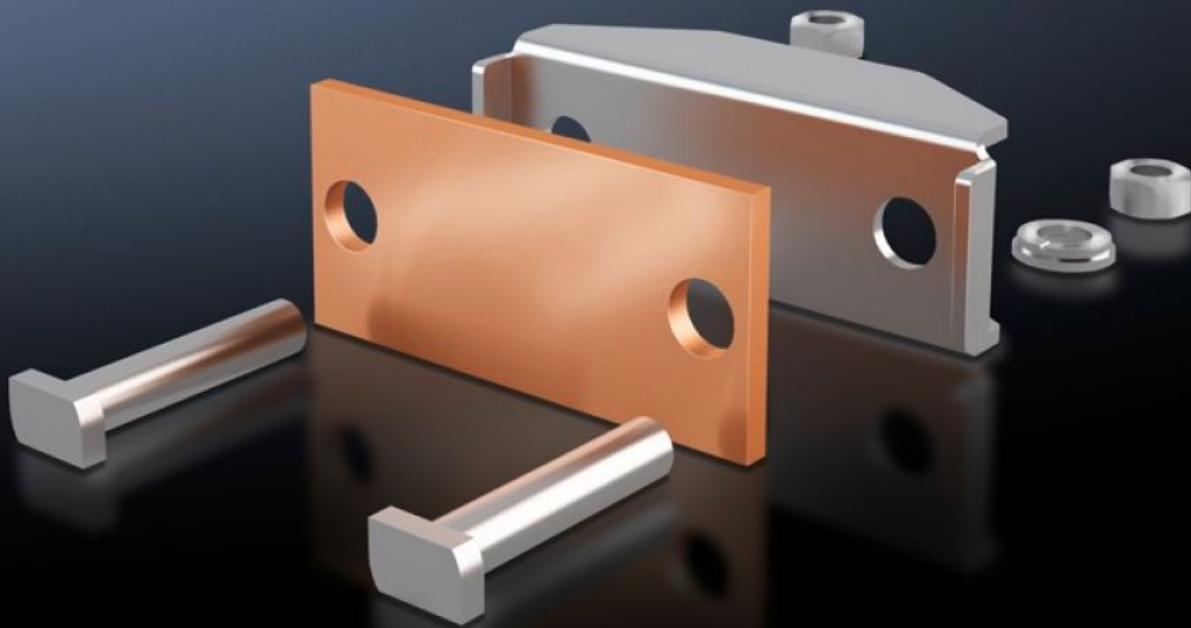


**Rittal – The System.**

Faster – better – everywhere.



# SV 9640.350 Connection Plate

State: 3/14/2022 (Source: [rittal.com/us-en](http://rittal.com/us-en))

ENCLOSURES

POWER DISTRIBUTION

CLIMATE CONTROL

IT INFRASTRUCTURE

SOFTWARE & SERVICES

FRIEDHELM LOH GROUP



# SV 9640.350 - Connection Plate for laminated copper bars

For the connection of laminated copper bars.

## Features

Product description	For the connection of laminated copper bars.
Material	Connection plate: E-Cu Pressure piece: Stainless steel
Supply includes	Assembly components
Suitable for busbars	Maxi-PLS 45 S/45
Suitable for laminated copper bars	Qty.: 2 Number of lamina: 10 Lamina width: 100 mm Lamina thickness: 1 mm Lamina width: 3.94 " Lamina thickness: 0.04 "
Clamping area for laminated copper bars (W x H)	100 x 20 mm 3.94 x 0.79 "
Weight/package unit	1.959 kg 4.3 lb.
Packaging unit	3 Stück
ETIM 7.0	EC002498
ECLASS 8.0	27379201

## Approvals

Approvals	UL + C-UL UR
Certificates	EAC
Explanations	Declaration of conformity