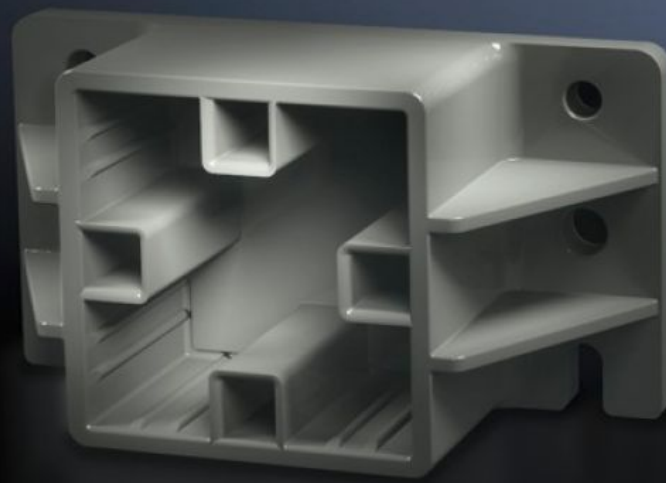


Rittal – The System.

Faster – better – everywhere.



SV 9649.010 End support

State: 3/14/2022 (Source: rittal.com/us-en)

ENCLOSURES

POWER DISTRIBUTION

CLIMATE CONTROL

IT INFRASTRUCTURE

SOFTWARE & SERVICES

FRIEDHELM LOH GROUP



SV 9649.010 - End support for Maxi-PLS busbars

To attach Maxi-PLS busbars to the sides by inserting into the supports.

Features

Product description	For attaching Maxi-PLS busbars when used as a cable connection system. The stepped configuration ensures simple cable installation.
Material	Polyamide Fire protection corresponding to UL 94-V0
Color	Similar to RAL 9011
Supply includes	Assembly components
Suitable for busbars	Maxi-PLS 45 S Maxi-PLS 45
Weight/packaging unit	0.276 kg 0.6 lb.
Packaging unit	2 Stück
ETIM 7.0	EC001166
ECLASS 8.0	27400607

Approvals

Approvals	C-UR DNV-GL Lloyds Register of Shipping UL + C-UL UR
Explanations	Declaration of conformity
