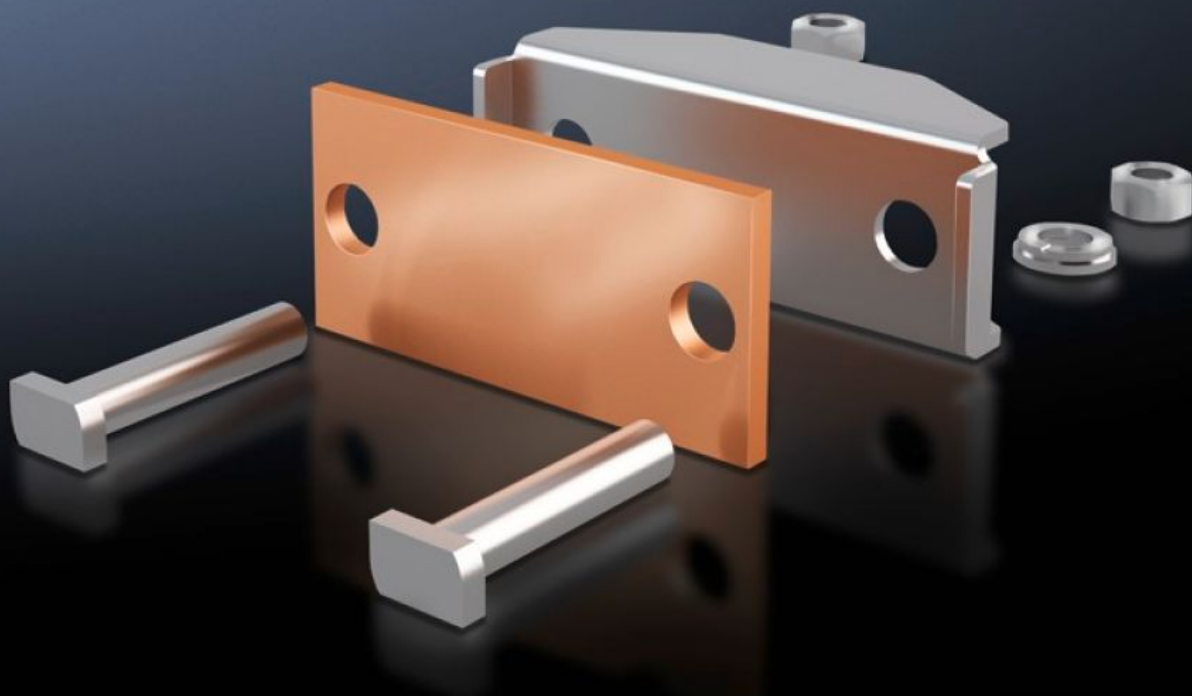
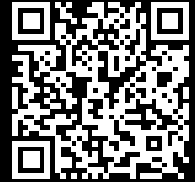


Rittal – The System.

Faster – better – everywhere.



SV 9650.340 Connection Plate

State: 3/14/2022 (Source: rittal.com/us-en)

ENCLOSURES

POWER DISTRIBUTION

CLIMATE CONTROL

IT INFRASTRUCTURE

SOFTWARE & SERVICES

FRIEDHELM LOH GROUP



SV 9650.340 - Connection Plate for laminated copper bars

For the connection of laminated copper bars.

Features

Product description	For the connection of laminated copper bars.
Material	Connection plate: E-Cu Pressure piece: Stainless steel
Supply includes	Assembly components
Suitable for busbars	Maxi-PLS 60
Suitable for laminated copper bars	Qty.: 2 Number of lamina: 10 Lamina width: 63 mm Lamina thickness: 1 mm Lamina width: 2.48 " Lamina thickness: 0.04 "
Clamping area for laminated copper bars (W x H)	63 x 20 mm 2.48 x 0.79 "
Weight/package unit	1.647 kg 3.6 lb.
Packaging unit	3 Stück
ETIM 7.0	EC002498
ECLASS 8.0	27379201

Approvals

Approvals	UL + C-UL UR
Certificates	EAC
Explanations	Declaration of conformity