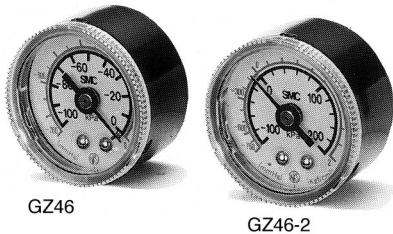


## Pressure Gauge for Vacuum: *Series GZ46*



### Specifications

Type	D type (Back screw)	
Indication accuracy	± 3%F.S. (Full span)	
Material	Case	Rolled steel (Black melamine coating)
	Transparent cover	Polycarbonate Model no: G46-00-00-3
	Body	Brass
With attachment cover assembly	C type	Model No: 1305104-1A
	C1 type	Model No: 1305104-3A

### Model

Model No.	Pressure range			Units	Connection	Note
	kPa	mmHg	mmHg to kgf/cm <sup>2</sup>			
GZ46-A-01 to 02	-100 to 0	-760 to 0	—	kPa (Dual) mmHg	R(PT) 1/8, 1/4	—
GZ46-A-02 to C1	-100 to 0	-760 to 0	—	kPa (Dual) mmHg	R(PT) 1/4	With cover assembly
GZ46-A-02M	-100 to 0	-760 to 0	—	kPa (Dual) mmHg	R(PT) 1/4 With M5 female thread	—
GZ46E-A-02M	-100 to 0	-760 to 0	—	kPa (Dual) mmHg	R(PT) 1/4 With M5 female thread	Oil free, Transparent cover: Hard coating treatment. Model No: G46-00-00-2
GZ46-2A-01 to 2	-100 to 200	—	-760 to 2	kPa (Dual) mmHg to kgf/cm <sup>2</sup>	R(PT) 1/8, 1/4	—

### Model (Made to Order)

Model No.	Pressure range		Units	Connecting	Note
	kPa	mmHg to kgf/cm <sup>2</sup>			
GZ46-1A-01 to 02	-100 to 100	-760 to 1	kPa mmHg to kgf/cm <sup>2</sup> (Dual)	R(PT) 1/8, 1/4	—

ZX

ZR

ZM

ZH

ZU

ZL

ZF

ZP

ZCU

Vacuum related

### ⚠ Precautions

Be sure to read before handling.  
Refer to p.0-20 and 0-21 for Safety Instructions and common precautions on the products mentioned in this catalog.

### Selection

### ⚠ Caution

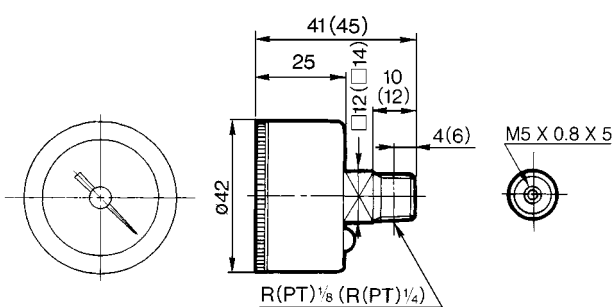
- Do not expose the gauge to shocks or vibrations.
- Contact SMC if the gauge is exposed to pressure pulsations or high frequency operation.

### Mounting

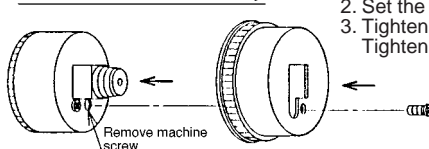
### ⚠ Caution

- During transport and installation, make sure the gauge is not exposed to shocks, such as dropping, to maintain the precision.
- To ensure the proper posture of the gauge, the zero point of the graduation on the gauge must face downward and perpendicular to the ground.
- Do not install the gauge in an area that is exposed to high temperatures or humidity in order to prevent faulty operation.
- When attaching the pressure gauge, make sure to place a wrench directly on the squared off portion. If a force is applied to some other area to screw in the gauge, it could cause the gauge to leak or to become damaged.

### Dimensions



#### How to install cover assembly



( ): Port size is R(PT)1/4

With cover assembly  
(For panel mounting)

Panel cut dimensions  
Plate thickness Max. 3.5t

