

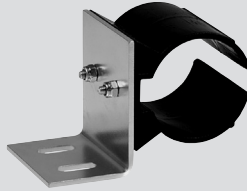
Safety light curtains and safety light grids

System components



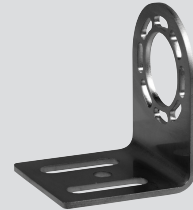
Programming cable KA-0974

System components



Mounting kit MS-1010

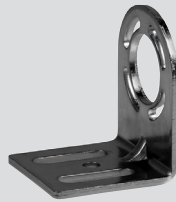
System components



Mounting kit MS-1073



Alignment kit EA-5



Mounting kit MS-1031 for ULS-A4



Vibration damper MSD-2 / MSD-4



Muting lamp with wall bracket MK2



Mounting kit MS-1038



Test rod PLS-01, PLS-02



Mounting kit MS-1000 / MS 1072



Mounting kit MS-1051

Ordering details

Programming cable
for SLC/SLG 440
Laser alignment tool
for SLC / SLG
Lighting element
Muting lamp with LED block
Operating conditions indication
Mounting kit for SLC /SLG 220
4 x angle incl. screws
2 x angle incl. screws

KA-0974

EA5

MK2

MS-1000

MS-1072

Mounting kit for central fixation
for SLC /SLG 220

2 x angle

Mounting kit for ULS-A4

2 x angle incl. screws

Mounting kit for
SLC/SLG 420-425 (V4A)

4 x angle incl. screws

Mounting kit for lateral fixation
for SLC/SLG 420-425

Consisting of 2 steel angles,
4 screws and 4 T-slot nuts

MS-1010

MS-1031

MS-1038

MS-1051

Ordering details

Mounting kit for deflecting mirror ULS-M
2 x angle MS-1073
Mounting kit for SLC 420
4 x angle incl. screws MS-1030
Vibration damper
8 x vibration damper
for SLC/SLG 220 MSD-2
for SLC/SLG 420-425 MSD-4
for SLC/SLG 440 MSD-5
Test rod
for resolution 30 mm PLS-01
for resolution 14 mm PLS-02

Safety light curtains and safety light grids

System components



Bus converter NSR-0801



Bus converter NSR-0700



Deflecting mirror ULS-M

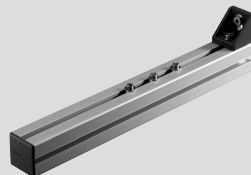
System components



Deflecting mirror ULS-A4, Ø 49 mm



Mounting stands MST



Muting Carrier Set

System components



Protective enclosure with deflecting mirror



Protective enclosure

Deflection Mirror Application Notes

ULS-M: Must be used when range is greater than 6m. With 1 mirror, range reduced by 10%, with 2 or more mirrors range reduced by 15% for each mirror.

ULS-A4: Must be used when range is less than 6m. With a loss of 20% at each mirror, only 1 mirror per emitter/receiver pair is recommended.

Ordering details

Bus converter

Converter for the parametrization of SLC/SLG 420-425

USB 2.0 interface **NSR 0801**

Converter for the parametrization of SLC / SLG 220

RS232 interface **NSR 0700**

Deflecting mirror ULS-MLC

Mirror height 200 mm **ULS-MLC-0200**

Mirror height 350 mm **ULS-MLC-0350**

Mirror height 500 mm **ULS-MLC-0500**

Mirror height 650 mm **ULS-MLC-0650**

Mirror height 800 mm **ULS-MLC-0800**

Mirror height 950 mm **ULS-MLC-0950**

Mirror height 1250 mm **ULS-MLC-1250**

Mirror height 1550 mm **ULS-MLC-1550**

Mirror height 1700 mm **ULS-MLC-1700**

Ordering details

Deflecting mirror ULS-A4 incl. mounting angle

Mirror height 200 mm **ULS-A4-0200**

Mirror height 400 mm **ULS-A4-0400**

Mirror height 550 mm **ULS-A4-0550**

Mirror height 700 mm **ULS-A4-0700**

Mirror height 850 mm **ULS-A4-0850**

Mirror height 1000 mm **ULS-A4-1000**

Mounting stands

Height including plinth 500 mm **MST-0500**

Height including plinth 750 mm **MST-0750**

Height including plinth 1000 mm **MST-1000**

Height including plinth 1250 mm **MST-1250**

Height including plinth 1500 mm **MST-1500**

Height including plinth 1750 mm **MST-1750**

Height including plinth 2000 mm **MST-2000**

Muting Carrier Set

2 x aluminum profile **MT-0400**

Ordering details

Protective enclosure with deflecting mirror

Version for 2-beam light grid **ULS-ST2**

Version for 3-beam light grid **ULS-ST3**

Version for 4-beam light grid **ULS-ST4**

Protective enclosure for light grids/curtains

Powder coated steel

Height 1334 mm **SG5**

Height 2134 mm **SG6**

Safety screen for protective enclosures (PMMA)

for SG5: height 1310 mm **SGS5**

for SG6: height 2110 mm **SGS6**

Deflecting mirror for protective enclosures

mirror height 1000 mm **ULS-SG-1000**

includes mounting hardware