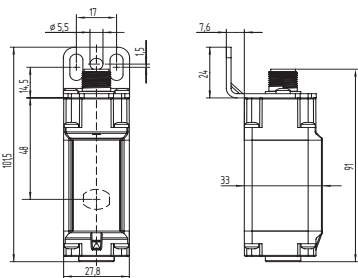
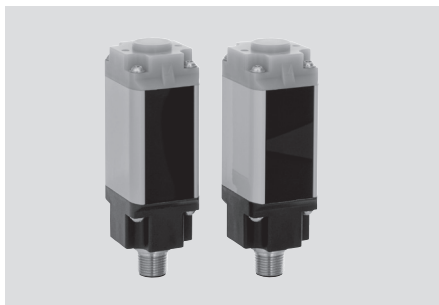


Safety light barriers

SLB 440



- Range 0.3 m to 15 m (18 m for H version)
- Field configurable extended range up to 75m (H option)
- Compact rectangular housing profile
- Type 4 safe OSSD outputs
- Integrated connector or cable with connector
- Illuminated LED end cap status indicator
- Integrated start/restart interlock
- Visual alignment set-up tool
- 4 stage beam coding
- Protection class IP67
- Optional internal electric heater

Technical data

Standards: EN 61496-1, EN 61496-2
EN ISO13849, EN 62061

Category: Type 4

Enclosure: aluminum

Enclosure dimensions: 27.8 x 33 x 72 mm (SLB440-H) 27.8 x 33 x 111 mm

Connection:

- emitter: M12 connector, 4-pole
- receiver: M12 connector, 4-pole or 5-pole

Max. cable length: 50 m

Protection class: IP67

Response time: 7 ms ... 22 ms depending on beam coding/samplings

Range (without H): 0.3 m... 15.0 m

Range (with H): (factory setting) 0.3 m... 18.0 m (Alternative range) 12.0 m... 75.0 m

Function: Protective mode / Automatic, Restart interlock (manual reset), Setting mode

Light emission wavelength: 880 nm

U_e: 24 VDC ± 10%, 1A

U_e (SLB440-H) 24 VDC ± 10% controllable

4A PELV mains unit in accordance with EN60204

Safety outputs: 2 x short circuit proof PNP semiconductor outputs

Angle of radiation: ± 2.5°

Min. size of object: 9 mm Ø

Ambient temperature: -30 °C ... +50 °C

Storage and transport temperature: -30 °C ... +70 °C

Classification:

Standards: EN ISO 13849-1; EN 62061

PL: up to e

Category: up to 4

PFH-value: 1.5 x 10⁻⁸ /h

SIL: up to 3

Service life: 20 years

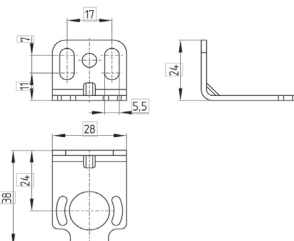
System components



Safety Controller



Connector plug



Mounting kit MS-1101

Approvals



Ordering details

SLB 440-ER-①-②-③-④

Nr.	Option	Description
①	1	Beam coding 1
	2	Beam coding 2
	3	Beam coding 3
	4	Beam coding 4
②	ST	M12 connector
	LST	200 mm cable with M12 connector
③		Standard range
	H	Alternative Range
④		without heater
	EH	with Electric Heater *

Ordering details

The system components (mounting brackets, cable, etc.) are not included in delivery.

Compatible Safety Controllers

SRB-E-201LC	SRB-E-201ST
SRB-E-301ST	SRB-E-212ST
SRB-E-322ST	SRB-E-204ST
SRB-E-204PE	SRB-E-402ST
SRB301MA	SRB301MC
SRB301ST	SRB324ST
SRB211ST	

Note: beam coding 1 is standard (stocked) and can be changed in the field.

* Electric heater (EH) only possible with SLB440-H version

Ordering details

Connector: Female connector M12
for emitter & receiver (automatic restart)

- 4-pole cable, length 5 m **KA-0804**
- 4-pole cable, length 10 m **KA-0805**
- 4-pole cable, length 20 m **KA-0808**

for receiver (restart interlock)

- 5-pole cable, length 5 m **101209949**
- 5-pole cable, length 15 m **101209948**

Cable for the parametrization
cable length 1 m **KA-0977**

Mounting kit **MS-1101**
Mounting kit (SLB440-H) **MS-1100**
includes 2 brackets, 4 fixing screws