



PS316-T11-S300

- thermoplastic enclosure with foldable latching cover
- Quick connection technology as connection terminals rotated by 45°
- Simple and quick to adjust the control elements by 45°.
- cable entry 1 x M20 x 1,5
- Design to EN 50041
- LED version available

Data

Ordering data

| | |
|-------------------------------|----------------|
| Product type description | PS316-T11-S300 |
| Article number (order number) | 103015146 |
| EAN (European Article Number) | 4030661502403 |
| eCl@ss number, version 12.0 | 27-27-26-01 |
| eCl@ss number, version 11.0 | 27-27-26-01 |
| eCl@ss number, version 9.0 | 27-27-26-01 |
| ETIM number, version 7.0 | EC000030 |
| ETIM number, version 6.0 | EC000030 |

Approvals - Standards

| | |
|--------------|---------------------|
| Certificates | cULus CCC EAC |
|--------------|---------------------|

General data

| | |
|--------------------------------------|---------------------------------|
| Standards | EN IEC 60947-5-1 |
| Housing construction form | Norm construction design |
| Actuator type to EN 50047 | B |
| Enclosure material | Plastic, glass-fibre-reinforced |
| Material of the contacts, electrical | Silver |
| Gross weight | 112 g |

General data - Features

| | |
|------------------------------|-----|
| Safety functions | Yes |
| Number of auxiliary contacts | 1 |
| Number of safety contacts | 1 |

Safety classification

| | |
|--------------|----------------|
| Standards | EN ISO 13849-1 |
| Mission time | 20 Year(s) |

Safety classification - Safety outputs

| | |
|---|-----------------------|
| B _{10D} Normally-closed contact (NC) | 20,000,000 Operations |
|---|-----------------------|

Mechanical data

| | |
|-------------------------------|---|
| Actuating element | Plunger S300 |
| Mechanical life, minimum | 10,000,000 Operations |
| Positive break force, minimum | 50 N |
| Actuating speed, minimum | 60 mm/min |
| Actuating speed, maximum | 0.5 m/s |
| Note (Actuating speed) | Actuating speed with actuating angle 30° to switch axis |

Mechanical data - Connection technique

| | |
|------------------------|---------------------------|
| Termination | Screw terminals M20 x 1.5 |
| Cable section, minimum | 0.34 mm ² |
| Cable section, maximum | 1.5 mm ² |

Mechanical data - Dimensions

| | |
|------------------|--------|
| Length of sensor | 37 mm |
| Width of sensor | 41 mm |
| Height of sensor | 104 mm |

Ambient conditions

| | |
|------------------------------|--------------|
| Degree of protection | IP67 IP66 |
| Ambient temperature, minimum | -30 °C |
| Ambient temperature, maximum | +80 °C |

Ambient conditions - Insulation values

| | |
|---|-------|
| Rated insulation voltage U_i | 300 V |
| Rated impulse withstand voltage U_{imp} | 4 kV |

Electrical data

| | |
|--------------------------------------|---------|
| Thermal test current | 10 A |
| Required rated short-circuit current | 400 A |
| Utilisation category AC-15 | 240 VAC |
| Utilisation category AC-15 | 3 A |
| Utilisation category DC-13 | 24 VDC |
| Utilisation category DC-13 | 3 A |

| | |
|---------------------|-----------------------------|
| Switching element | 1 NO contact, 1 NC contacts |
| Switching principle | Slow action |
| Switching frequency | 5,000 /h |

Ordering code

Product type description:

PS(2)-(3)-(4)-(5)-(6)-(7)-(8)-(9)-(10)-(11)-(12)

(1)

| | |
|----------------|---|
| without | non-EX version |
| EX | Types of protection Ex d and t, to Zone 1/21 |
| EXI | Types of protection Ex i and t, up to Zone 1/21 |

(2)

| | |
|------------|-------------------------|
| 315 | Metal enclosure |
| 316 | Thermoplastic enclosure |

(3)

| | |
|----------------|-------------------|
| without | L-hole (standard) |
| L | elongated hole |

(4)

| | |
|-------------|---|
| Z11 | Snap action 1 NO contact / 1 NC contact |
| Z02 | Snap action 2 NC contacts |
| Z12 | Snap action 1 NO contact / 2 NC contact |
| Z11R | Snap action 1 NO contact / 1 NC contact with latching |
| Z01R | Snap action 1 NC contact with latching |
| Z02R | Snap action 2 NC contacts with latching |
| T11 | Slow action 1 NO contact / 1 NC contact |
| T02 | Slow action 2 NC contacts |
| T20 | Slow action 2 NO contact |

| | |
|--------------|---|
| T12 | Slow action 1 NO contact / 2 NC contact |
| T21 | Slow action 2 NO contact / 1 NC contact |
| T03 | Slow action 3 NC contacts |
| T11UE | Slow action 1 NO contact / 1 NC contact with overlapping contacts |
| T02H | Slow action 2 NC contacts with staggered contacts |
| T11K | Slow action 1 NO contact + 1 NC contact - short-stroke |
| T10 | Slow action 1 NO contact |
| T02K | Slow action 2 NO contacts short-stroke |
| T20H | Slow action 2 NO contacts staggered |

(5)

| | |
|----------------|-----------------------------------|
| without | Contacts silver plated (Standard) |
| A1 | Gold contacts 0,3 µm |
| A2 | Gold contacts 1,0 µm |
| A3 | Gold contacts 3,0 µm |

(6)

| | |
|----------------|---------------------------|
| without | without indication light |
| G | integrated status display |

(7)

| | |
|----------------|---------------------------------------|
| without | Cable entry M20 |
| ST | Connector plug M12 - plastic - bottom |
| STM | Connector plug M12, metal |

(8)

| | |
|-------------|--|
| S200 | plunger S200 Ø 6 mm |
| S300 | Plunger - plastic - tappet width Ø 9 mm |
| S310 | Plunger - plastic - tappet width Ø 9 mm - with bellows |
| R300 | Roller plunger - plastic roller - width 4.6 mm |
| R302 | Roller plunger - brass roller - width 4.6 mm |

| | |
|-------------|--|
| R310 | Roller plunger - plastic roller - width 4.6 mm |
| K360 | Angle roller lever with plastic roller Ø 20 mm - left-bent |
| K370 | Angle roller lever with plastic roller Ø 20 mm - right-bent |
| H300 | Roller lever - plastic roller Ø 25 mm |
| H301 | Roller lever - stainless steel roller Ø 25 mm |
| H302 | Roller lever - brass roller Ø 25 mm |
| H310 | Roller lever - plastic roller Ø 20 mm |
| H311 | Roller lever - stainless steel roller Ø 20 mm |
| H312 | Roller lever - brass roller Ø 20mm |
| H326 | Roller lever - rubber roller Ø 20mm |
| H330 | Roller lever |
| N300 | Roller lever - plastic roller Ø 25 mm |
| N301 | Roller lever - stainless steel roller Ø 20 mm |
| N306 | Roller lever - rubber roller Ø 50mm |
| N360 | Roller lever - plastic roller Ø 20 mm - width 9.8 mm - long |
| N370 | Roller lever - plastic roller Ø 20 mm - width 9.8 mm - very long |
| J300 | Rod lever - plastic - 200mm -Ø 6mm |
| F230 | Spring rod - stainless steel - 150.4 mm |
| F231 | Spring rod - stainless steel - 70.2 mm |
| A200 | Special actuating bolt - plastic - valve control |

(9)

| | |
|----------------|-------------------------------|
| without | no intent rotation (Standard) |
| U1 | intent rotation 45° |
| U2 | intent rotation 90° |
| U3 | intent rotation 135° |
| U4 | intent rotation 180° |
| U5 | intent rotation 225° |
| U6 | intent rotation 275° |
| U7 | intent rotation 315° |

(10)

| | |
|----------------|------------------------------|
| without | no lever rotation (Standard) |
| X1 | lever rotation 15° |
| X2 | lever rotation 30° |
| X3 | lever rotation 45° |
| X4 | lever rotation 60° |
| X5 | lever rotation 75° |
| X6 | lever rotation 90° |
| X7 | lever rotation 105° |
| X8 | lever rotation 120° |
| X9 | lever rotation 135° |
| X10 | lever rotation 150° |
| X11 | lever rotation 165° |
| X12 | lever rotation 180° |
| X13 | lever rotation 195° |
| X14 | lever rotation 210° |
| X15 | lever rotation 225° |
| X16 | lever rotation 240° |
| X17 | lever rotation 255° |
| X18 | lever rotation 270° |
| X19 | lever rotation 285° |
| X20 | lever rotation 300° |
| X21 | lever rotation 315° |
| X22 | lever rotation 330° |
| X23 | lever rotation 345° |

(11)

| | |
|----------------|---------------------------|
| without | Roller outside (Standard) |
| I | Roller inside |

(12)

without -30...+80°C (Standard)

T -40...+80°C

(13)

(14)

without Zone 2 and 22

3GD Zone 2 and 22

2D Zone 21

3D Zone 22

Pictures

Product picture (catalogue individual photo)

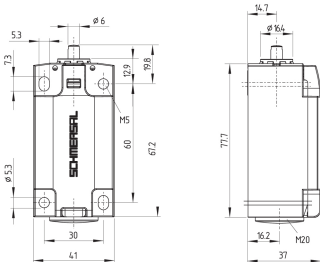


ID: kps3sf02

| 872.5 kB | .jpg | 352.778 x 603.956 mm - 1000 x 1712 px - 72 dpi

| 52.1 kB | .png | 74.083 x 126.647 mm - 210 x 359 px - 72 dpi

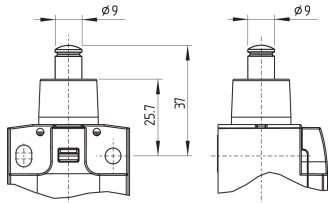
Dimensional drawing basic component



ID: kps3xg05

| 123.9 kB | .jpg | 352.778 x 289.278 mm - 1000 x 820 px - 72 dpi

Dimensional drawing actuator

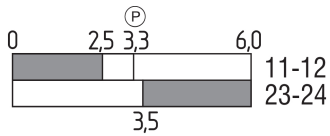


ID: kps3xb08

| 101.2 kB | .jpg | 352.778 x 225.425 mm - 1000 x 639 px - 72 dpi

| 5.3 kB | .png | 74.083 x 47.272 mm - 210 x 134 px - 72 dpi

Switch travel diagram

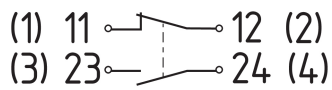


ID: kps31s02

| 1.7 kB | .png | 74.083 x 29.986 mm - 210 x 85 px - 72 dpi

| 51.4 kB | .jpg | 352.778 x 142.522 mm - 1000 x 404 px - 72 dpi

Diagram



ID: kps2xk09

| 57.7 kB | .jpg | 352.778 x 110.067 mm - 1000 x 312 px - 72 dpi

| 2.7 kB | .png | 74.083 x 22.931 mm - 210 x 65 px - 72 dpi

Schmersal, Inc., 15 Skyline Drive, Hawthorne, NY 10532

The details and data referred to have been carefully checked. Images may diverge from original. Further technical data can be found in the manual. Technical amendments and errors possible.

Generated on: 12/13/2022, 5:29 AM